



Installation Instructions

E-Series Push/Pull and Carpet Pole Removal and Installation

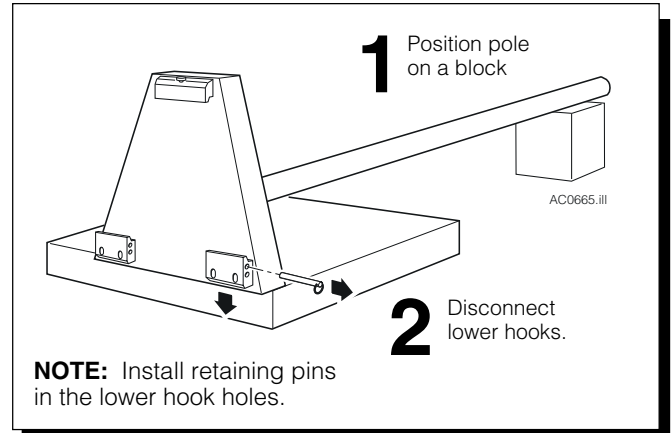
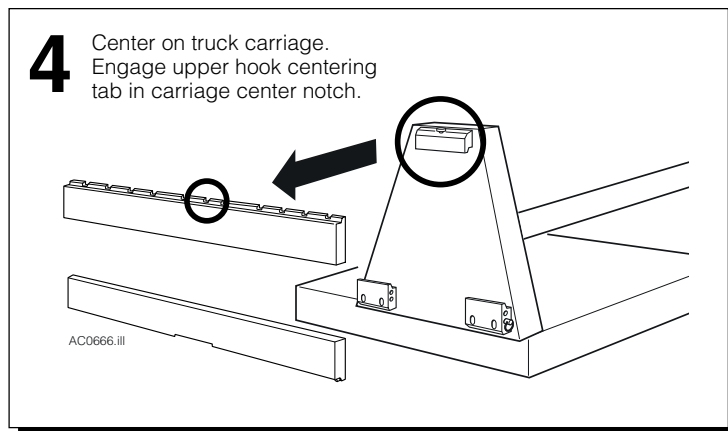
This sheet provides instructions to remove and install Cascade Push/Pull and Carpet Pole attachments. Refer to specific service, installation and operator guides for proper handling procedures and guidelines.

Carpet Pole Removal and Installation

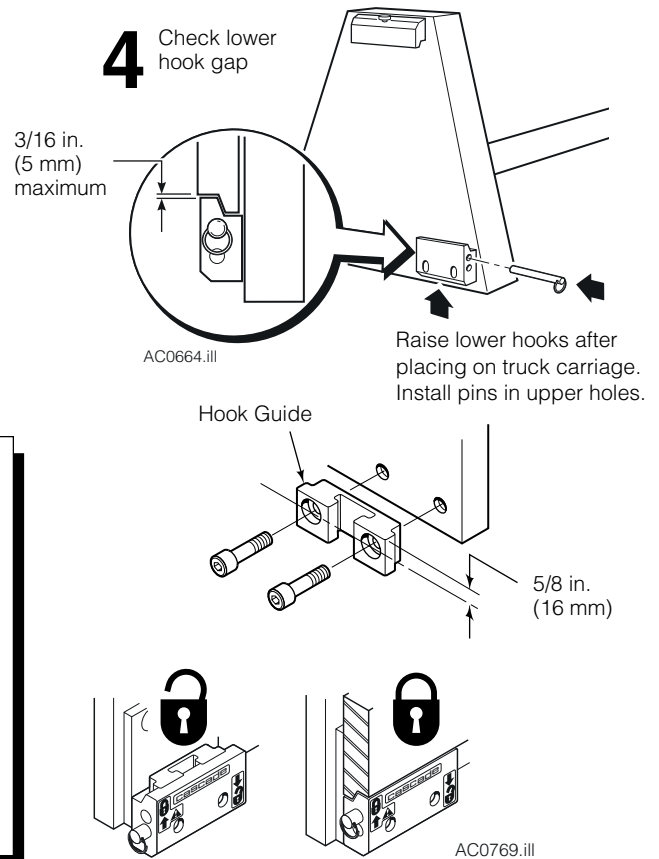


WARNING: Keep hands and feet away from pinch points and under the attachment.

- 1 Lower the attachment onto a pallet. Place the pole on a block.
- 2 Disconnect the Quick-Change lower hooks. Pull out the retaining pins, slide the lower hooks down and install the retaining pins in the lower hook holes.
- 3 Lower the truck carriage and back away from the attachment.
- 4 For installation, reverse the above procedures except for the following items:
 - Make sure the center locating tab in the upper hook properly engages the center notch in the upper truck carriage bar.
 - The gap between the lower hook and carriage bar must not exceed 3/16 in. (5 mm). If gap is excessive, remove the hook guides and turn them over. Tighten the capscrews to a torque of 118-125 ft.-lbs. (160-170 Nm).
 - Slide lower hooks up and install retaining pins in the hook top holes to secure carpet pole on carriage.



NOTE: Install retaining pins in the lower hook holes.



cascade®
corporation

For Technical Support . . .

Call: 1-800-227-2233 Fax: 1-888-329-8207
Internet: www.cascorp.com
Write: Cascade Corporation, PO Box 20187, Portland, OR 97294

To Order Parts . . .

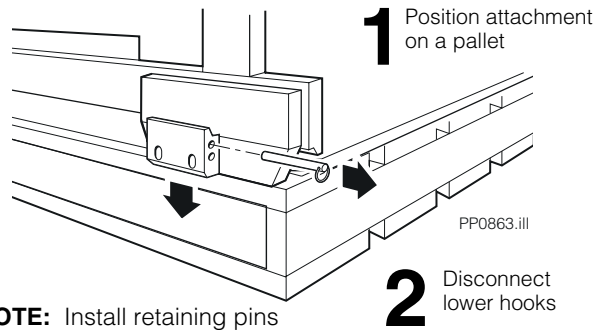
Call: 1-888-227-2233 Fax: 1-888-329-0234
Internet: www.cascorp.com
Write: Cascade Corporation, 2501 Sheridan Ave., Springfield, OH 45505

Push/Pull Removal and Installation



WARNING: Keep hands and feet away from pinch points and under the attachment.

- 1 Fully extend the faceplate. Lower the attachment onto a pallet. Position the lower hooks over the edge of the pallet to allow the hooks to slide down.
- 2 Disconnect the Quick-Change lower hooks. Pull out the retaining pins, slide the hooks down and install the pins in the hook lower holes.



NOTE: Install retaining pins in the lower hook holes.



WARNING: Before removing hoses, relieve pressure in the hydraulic system. Turn the truck off, then open the truck auxiliary valve(s) several times in both directions.

- 3 Disconnect and tag the hoses at the carriage hose terminal.
- 4 Lower the truck carriage and back away from the attachment.
- 5 For installation, reverse the above procedures except for the following items:
 - Make sure the center locating tab in the upper hook properly engages the center notch in the upper truck carriage bar.
 - The gap between lower hook and carriage bar must not exceed 3/16 in. (5 mm). If gap is excessive, remove the hook guides and turn them over. Tighten the capscrews to a torque of 118-125 ft.-lbs. (160-170 Nm).
 - Slide lower hooks up and install the retaining pins in the top holes to secure the attachment on the carriage.

