

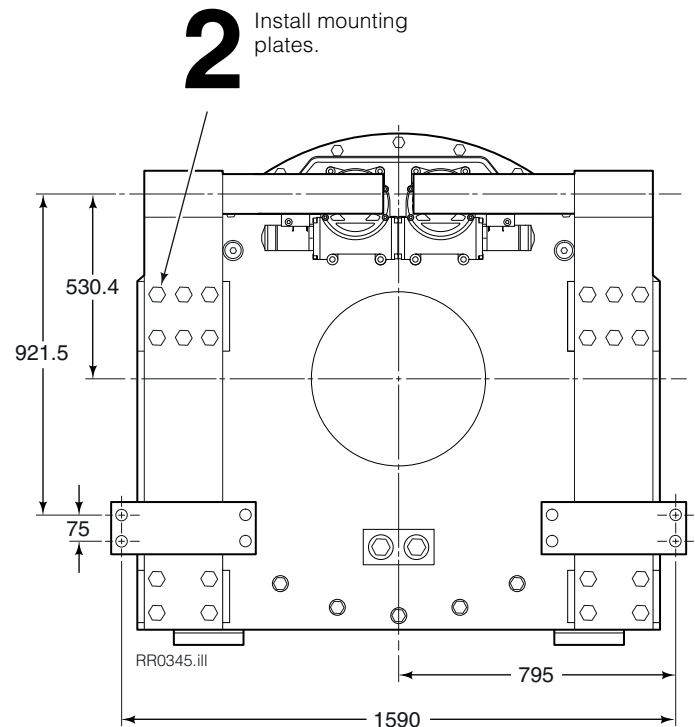
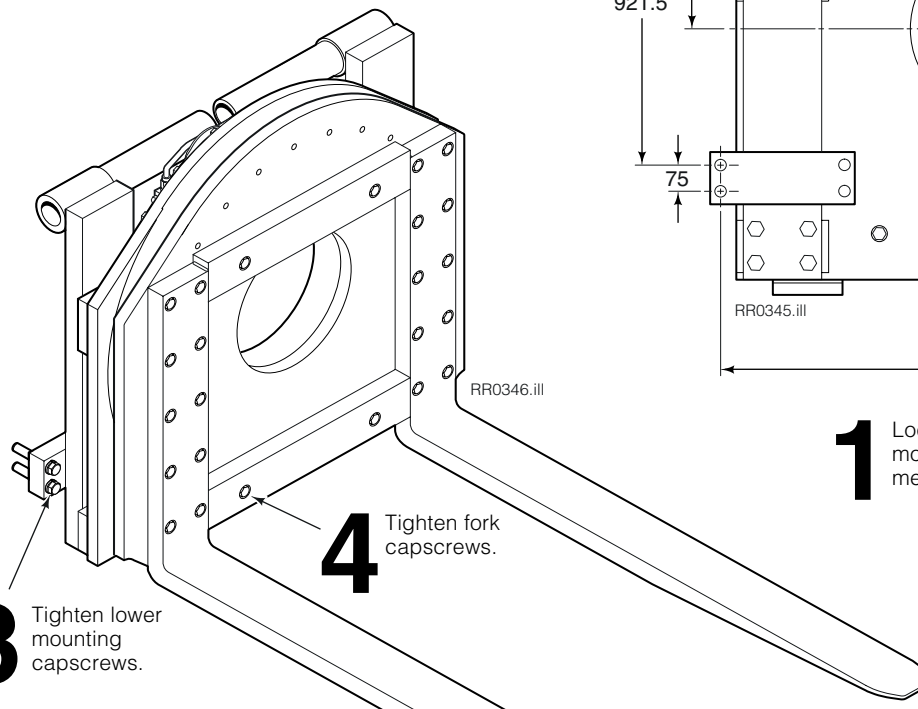


Installation Instructions

400D Rotator Pin Mounting for CAT DP150D

This sheet provides mounting hole dimensions and torque values for the installation of a pin mounted 400D Rotator on a CAT model DP150D.

- 1 Use the locating dimensions or pin mounting components as a template to drill and tap four lower mounting holes. Drill and tap M30 x 3.5-6G holes with a minimum thread depth of 1.75 in. (45 mm).
- 2 Install the mounting plates to the back of the rotator using twenty M30 GR 8.8 capscrews. Tighten the capscrews to 1100 ft.-lbs. (1470 Nm), loosen 1/2 turn, then retighten (double torque).



- 1 Locate, drill and tap lower mounting holes using metric dimensions shown.

- 3 Install the rotator on the truck using eight M30 GR 8.8 capscrews for the lower mounts. Tighten the capscrews to 1100 ft.-lbs. (1470 Nm).
- 4 Install the forks using twenty four M24 GR 8.8 capscrews. Tighten the capscrews to 1100 ft.-lbs. (740 Nm), loosen 1/2 turn, then retighten (double torque).

cascade[®]
corporation

For Technical Support . . .

Call: 1-800-227-2233

OR

Write: Cascade Corporation, P.O. Box 20187, Portland, OR 97294

© Cascade Corporation 2004

To Order Parts . . .

Call: 1-888-227-2233

OR

Write: Cascade Corporation, 2501 Sheridan Ave., Springfield, OH 45505

1-2004

Part No. 6038790