



# Installation Instructions

## Scenario 2 – Push/Pull Conversion Kit 6029428 and 55F Sideshifter

These instructions describe how to do a Scenario 2 conversion to a Cascade 45E Push/Pull that will be mounted on a new 55F Sideshifter and equipped with quick-disconnect hydraulic couplers.

The push/pull conversion consists of new quick-disconnect lower hooks and a rod to replace the sideshift cylinder.

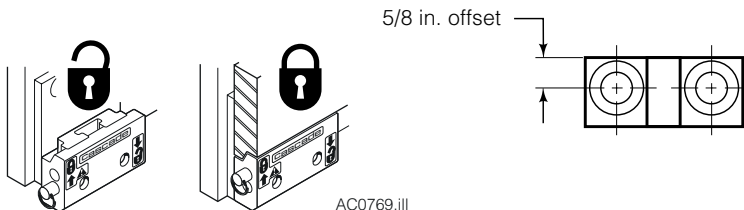
### Push/Pull Conversion

- 1 Fully extend the faceplate. Lower the attachment onto a pallet.
- 2 Remove the lower mounting hooks.



**WARNING:** Before removing any hoses, relieve pressure in the hydraulic system. Turn the truck off, then open the truck auxiliary valve(s) several times in both directions.

- 3 Disconnect, tag and plug the hoses to the push/pull at the carriage hose terminals.
- 4 Lower the truck carriage and back away from the attachment.
- 5 Install the quick-disconnect lower hook guides to the lower hook mounting holes with the 5/8 in. offset to the top. Tighten the capscrews to a torque of 118-125 ft.-lbs. Install the lower hooks and insert the retainer pin in the lower hole.



AC0769.ill

Part No. 6029770-R1

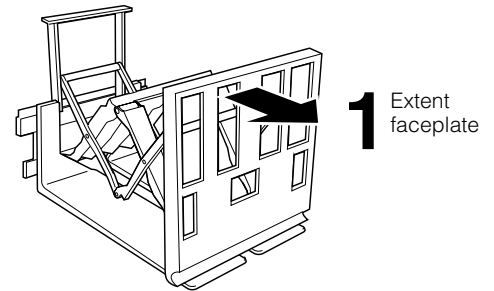
**cascade®**  
**corporation**

#### For Technical Support . . .

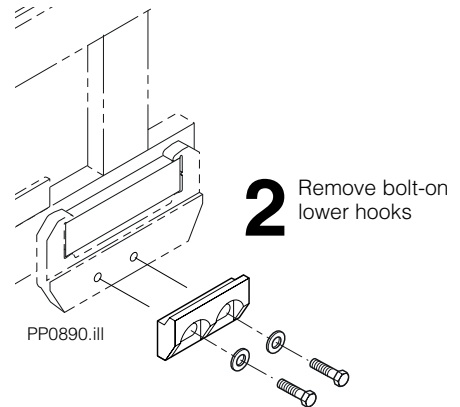
Call: 1-800-227-2233 Fax: 1-888-329-8207  
Internet: [www.cascorp.com](http://www.cascorp.com)  
Write: Cascade Corporation, PO Box 20187, Portland, OR 97294

#### To Order Parts . . .

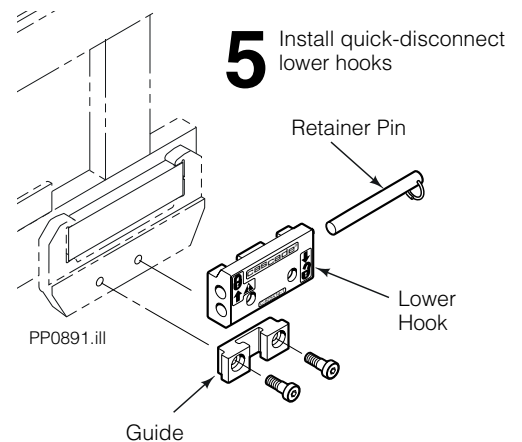
Call: 1-888-227-2233 Fax: 1-888-329-0234  
Internet: [www.cascorp.com](http://www.cascorp.com)  
Write: Cascade Corporation, 2501 Sheridan Ave., Springfield, OH 45505



PP0889.ill

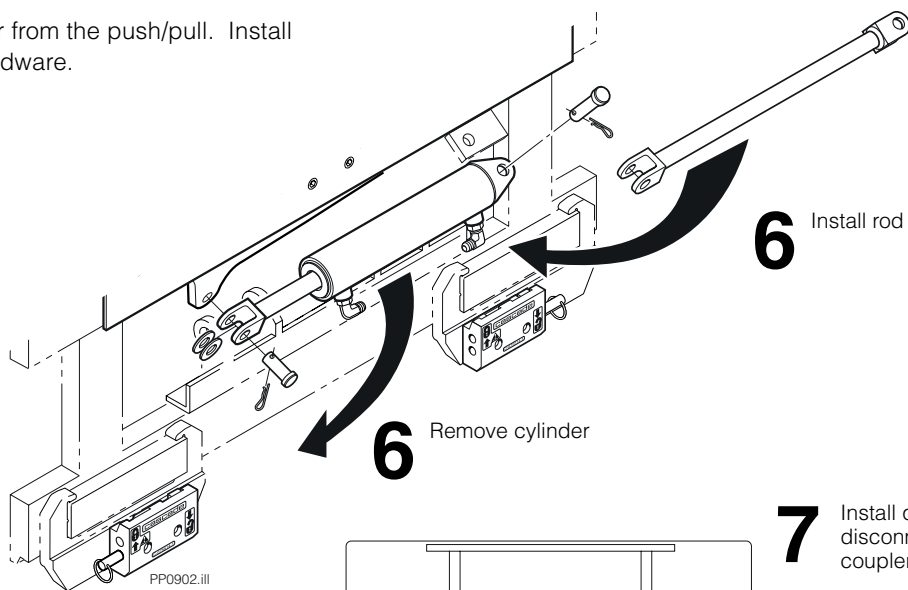


PP0890.ill

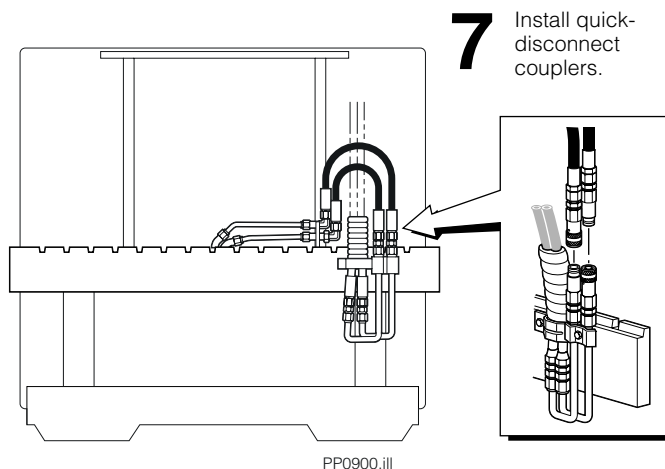


PP0891.ill

- 6 Remove the sideshift cylinder from the push/pull. Install the rod using the existing hardware.



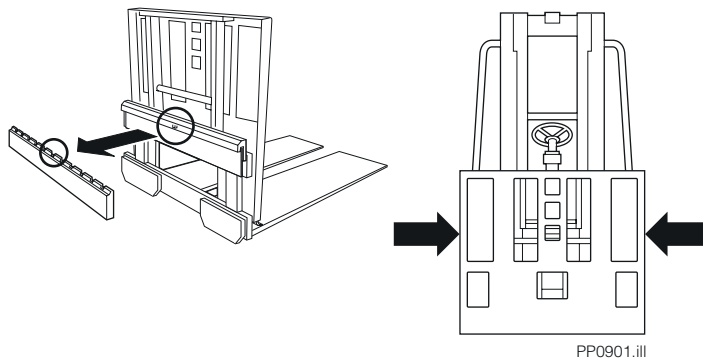
- 7 Install the hydraulic quick-disconnect couplers to the supply hoses at the carriage. See the instructions provided with the couplers.



## Attachment Installation

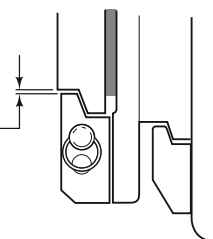
- 1 Install the new 55F Sideshifter on the truck carriage. See the instructions provided with the sideshifter.
- 2 Install the push/pull on the sideshifter. Center the push/pull and engage the centering tab with the carriage center notch.
- 3 Raise and engage the push/pull lower hooks. Install the retainer pin in the hook upper hole. Check the lower hook clearance. If clearance is excessive, reverse the guides.

- 2 Center and engage centering tab.

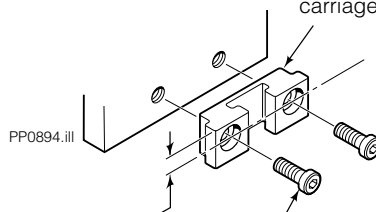


- 3 Raise and engage lower hooks.

**Clearance:**  
1/32 in. Min.  
1/16 in. Max.



Reverse guides to reduce carriage hook to carriage clearance.



5/8 in. offset on top provides maximum hook clearance.

Tighten capscrews to 120 ft.-lbs.

