



# Technical Bulletin

## P5 Load Push/Pull Gripper Cylinder Conversion Kit 685264

This sheet provides instructions to install new gripper cylinders on P5 Load Push/Pulls. The kit includes two cylinders and all required hardware for the conversion. **NOTE:** After the kit has been installed the replacement cylinder part no. is 674118.

- 1 Fully extend the faceplate.



**WARNING:** Before removing any hoses, relieve pressure in the hydraulic system. Turn the truck off, then open the truck auxiliary valve(s) several times in both directions.

- 2 Remove the existing cylinders and fittings from the faceplate. See Figure 1.
- 3 Enlarge the top cylinder base end anchor holes to 13/16 in. diameter.
- 4 Using the kit components, install fittings to the cylinders as shown in Figure 2.
- 5 Place the cylinders in the faceplate and determine the modifications required to allow the hoses and fittings a minimum of 1/8 in. clearance.
- 6 Remove the cylinders and perform any necessary modifications to the faceplate.
- 7 Install the cylinders in the faceplate. Use the 5/16 X 1-1/4 in. long roll pin to fasten the cylinder base end to the faceplate.
- 8 Use the 5/16 X 1-1/2 in. long dowel pin and 1/8 in. roll pin to fasten the cylinder rod end to the gripper bar.
- 9 Attach hoses to the cylinder fittings, replacing the 20.5 in. long hose with the 22 in. hose included in the kit.
- 10 After the kit installation is complete, operate the truck hydraulic valve to extend the faceplate. Keep the faceplate extended for 20 seconds while actuating the valve to bleed air from the hydraulic system to the truck tank.

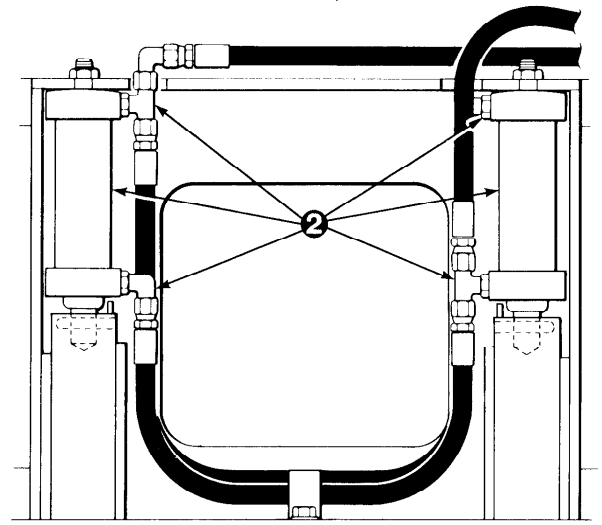


Figure 1.

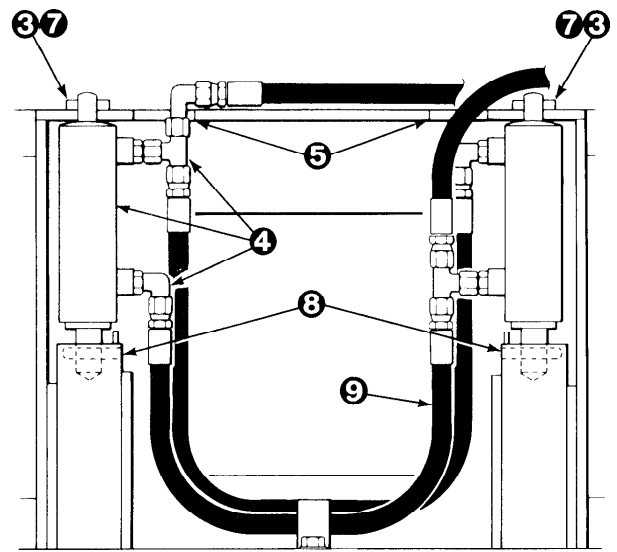


Figure 2.

**NOTE:** This information should not be interpreted as the basis for warranty claims unless so designated.  
Part No. 685963

# cascade®

For Technical Assistance . . .

Call: 1-800-CASCADE or 503-669-6300

OR

Write: Cascade Corporation, P.O. Box 20187, Portland, OR 97220

To Order Parts . . .

Call: 513-322-1199

OR

Write: Cascade Corporation, P.O. Box 360, Springfield, OH 45505